



Forest SAT 2026

Association for Forest Spatial Analysis Technologies

May 4-8, 2026

Gainesville, Florida, USA

SPONSORSHIP PROSPECTUS



UF | IFAS
UNIVERSITY of FLORIDA

SCHOOL OF FOREST,
FISHERIES, AND
GEOMATICS SCIENCES



Association for Forest
Spatial Analysis Technologies

ForestSAT2026.com

Why Become a Sponsor?



Overview

This conference is the largest gathering of professionals from the Forest Spatial Analysis Technologies field and is the perfect opportunity to interact with your target market, promote your products and maintain a high profile among professionals. The biennial meeting of the Association for Forest Spatial Analysis Technologies (ForestSAT) has become the leading international gathering of researchers, practitioners and stakeholders interested in the development and use of established and emerging technologies for the observation and analysis of forests. ForestSAT 2026 will be hosted by the **Forest Biometrics, Remote Sensing and AI Lab (SilvaLab)** at the UF/IFAS School of Forest, Fisheries, and Geomatics Sciences in Gainesville, Florida. Sessions will be held at the J. Wayne Reitz Union on the beautiful University of Florida campus.

As a participating sponsor, your organization will have the opportunity to:

- Rub shoulders and engage with more than 500 global thought leaders driving significant change within the sector
- Develop key corporate relationships and expose your staff to local and international markets
- Maximize networking opportunities with members of the ForestSAT community during lunch, refreshment and social functions including the Ice Breaker Reception, a Gala Dinner and post conference Field Trips
- Host a display in the Exhibit Hall to showcase your products and services to the ForestSAT community
- Gain visibility during an extensive promotional campaign in the months and years leading up to ForestSAT 2026

**Your early commitment will give you an advantage.
Sign up today and start getting recognized!**

Hosted by the Forest Biometrics, Remote Sensing and AI Lab (SilvaLab) at the UF/IFAS School of Forest, Fisheries, and Geomatics Sciences

May 4-8, 2026
Gainesville, FL, USA



UF/IFAS
UNIVERSITY of FLORIDA

**SCHOOL OF FOREST,
FISHERIES, AND
GEOMATICS SCIENCES**



Association for Forest
Spatial Analysis Technologies

Sponsorship Opportunities



Organizations, private sector firms and government agencies are invited to become supporting partners in hosting the ForestSAT 2026 conference. Don't miss your chance to be a part of this exciting community of ForestSAT and take advantage of this opportunity.

Benefits at Each Sponsorship Level	Platinum \$20,000+	Gold \$15,000+	Silver \$10,000+	Bronze \$5,000+
Complimentary registrations to attend the event	4	3	2	1
Tabletop display space in the high traffic poster and refreshment break area (<i>Display space is limited and will be available on a first-come, first-served basis. Sign up early to secure space for your company!</i>)	2 Tables	2 Tables	1 Table	1 Table
Opportunity for a demo of equipment/product on conference field trip				
Recognition on bus signage during field trip				
Logo featured on front page of website as premium sponsor				
Exclusive recognition page on web site with representative's photo, contact listing, electronic brochure, and video.				
Logo on attendee tote bag				
A brochure insertion in attendee tote bag (printing & delivery costs covered by sponsor)				
Logo to appear on custom beverage napkin during a break				
High profile shout-out in a conference email blast				
Recognition as a sponsor during a group function				
Recognition on signage at a charging station				
Email signature graphic recognizing your sponsorship				
A special social media post announcing your sponsorship				
Access to post-conference list of attendees				
Your logo will appear in multiple publicity emails sent to more than 5,000 global professionals				
Acknowledgment at the opening and closing session				
Logo on the back cover of the program book				
Logo displayed on sponsor signage at the conference				
Logo featured on PowerPoints in meeting rooms				
Logo displayed on conference website				

Hosted by the Forest Biometrics, Remote Sensing and AI Lab (SilvaLab) at the UF/IFAS School of Forest, Fisheries, and Geomatics Sciences

May 4-8, 2026
Gainesville, FL, USA



UF/IFAS
UNIVERSITY of FLORIDA

**SCHOOL OF FOREST,
FISHERIES, AND
GEOMATICS SCIENCES**



Association for Forest
Spatial Analysis Technologies



Sponsor Display Information

A limited amount of space is available for sponsors confirmed at the Gold Level and above, to set up table-top displays in the poster display and refreshment break area.

Sponsor Display Set-up & Removal Times

Move-in Displays:	Monday, May 4, 2026	2:00pm–5:00pm
Move-out Displays:	Thursday, May 7, 2026	3:30pm–5:30pm

- Each table top consists of a 6' x 24" x 30"h table draped and skirted, and two chairs, with a 6' by 6' cube of display space.
- Pop-up banners may be used, as long as they fit within the 6' x 6' cube of space.
- If your sponsorship comes with two tables, you will have double the amount of space.
- If you plan to put pop-up banners behind your table, make sure your graphics department knows the important content needs to appear at the top of the banner.
- Your table will be labeled with a tent card to identify its assigned location.
- Internet is provided complimentary. No electricity will be available.
- Posters and sponsor tabletop displays will be set up in the same area. This is where daily morning, mid-day and afternoon refreshment breaks will be served.
- Tabletop displays are meant to serve as a forum to share informational materials, so a representative does not need to be stationed at the table during sessions. If you want to interact with attendees, the times that would be most effective to do so are during early morning refreshments, daily am and pm breaks, and networking functions.
- We expect approximately 500 attendees if you wish to bring informational materials sufficient for all.
- Anyone attending the conference must be a full registrant. If someone is helping you set up the display, they do not need to register. If they will remain at the conference, they must be registered as an attendee.
- **Important:** While meetings will take place at the Reitz Union on the University of Florida campus, we recommend shipping display materials to yourself at the primary host hotel. On move-in day (Monday, May 4), staff will be available to assist you with transporting items from the hotel to the Reitz Union for set up in the Grand Ballroom.

Hosted by the Forest Biometrics, Remote Sensing and AI Lab (SilvaLab) at the UF/IFAS School of Forest, Fisheries, and Geomatics Sciences

May 4-8, 2026
Gainesville, FL, USA



UF/IFAS
UNIVERSITY of FLORIDA

**SCHOOL OF FOREST,
FISHERIES, AND
GEOMATICS SCIENCES**



Association for Forest
Spatial Analysis Technologies

Attendee Snapshot



Who will attend the conference?

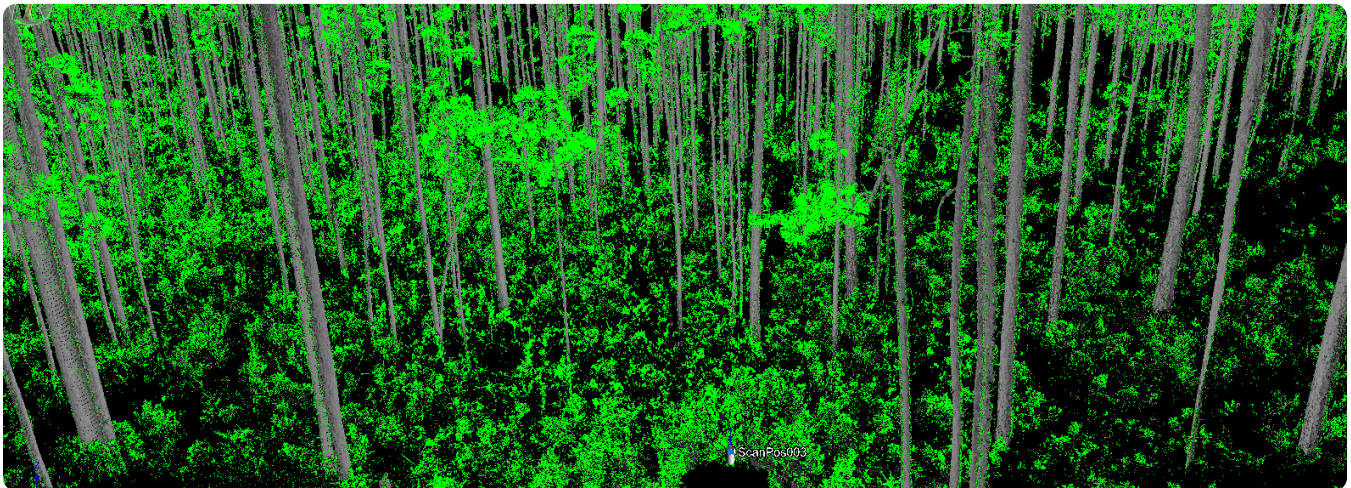
ForestSAT is attended by more than 500 participants from around the world representing research organizations, universities, government agencies, and the private sector. The ForestSAT community has grown steadily in both number and geographical distribution over the past several years and we invite you to join us!

Previous dates & venues include:

- Rotorua, Aotearoa / New Zealand (2024)
- Berlin, Germany (2022)
- Maryland, USA (2018)
- Santiago, Chile (2016)
- Riva del Garda, Italy (2014)
- Corvallis, Oregon, USA (2012)
- Lugo, Spain (2010)
- Montpellier, France (2007)
- Borås, Sweden (2005)
- Edinburgh, Scotland (2002)

Why is ForestSAT more relevant than ever?

New remote sensing missions, airborne and in-situ platforms, and the explosion in data fusion and cloud computing technologies are revolutionizing how we monitor and model forests around the world. These technologies are also helping us confront new management challenges within forested ecosystems, including human and natural stressors. ForestSAT2026 brings its participants to the forefront of this revolution, continuing the legacy of previous ForestSAT conferences that first began in 2002.



Hosted by the Forest Biometrics, Remote Sensing and AI Lab (SilvaLab) at the UF/IFAS School of Forest, Fisheries, and Geomatics Sciences

May 4-8, 2026
Gainesville, FL, USA



UF/IFAS
UNIVERSITY of FLORIDA

**SCHOOL OF FOREST,
FISHERIES, AND
GEOMATICS SCIENCES**



Association for Forest
Spatial Analysis Technologies

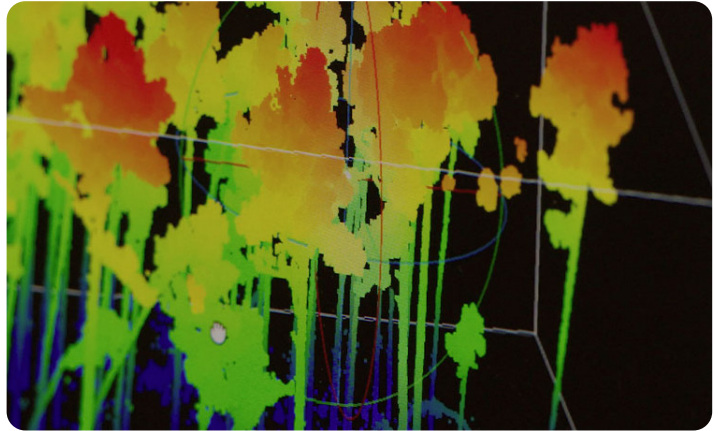
Sponsor Today!

Become a Sponsor



Important Items to Note

- All sponsor representatives (including those receiving the complimentary registration benefit) are **required to register**. Completion of the sponsorship commitment form does not count as a registration.
- Sponsorships will be confirmed on a first-come, first-served basis and upon receipt of payment, but the sooner you confirm your support, the sooner your organization starts being recognized in our publicity emails and on the event web site. *Sponsorship payments **must be received by March 20, 2026 to be recognized in print***
- All terms of participation as a sponsor are outlined in the [Sponsorship Terms of Agreement](#). Should Acts of God or natural or public health emergencies preclude this event from being held in-person, sessions will be virtual and your sponsorship will remain intact.



Thank You Sponsors

On behalf of the [Executive Organizing Committee](#), we wish to thank all of the organizations that take the extra step to collaborate with us by becoming a sponsor. This event would not be possible without your support!



Hosted by the Forest Biometrics, Remote Sensing and AI Lab (SilvaLab) at the UF/IFAS School of Forest, Fisheries, and Geomatics Sciences

May 4-8, 2026
Gainesville, FL, USA



UF/IFAS
UNIVERSITY of FLORIDA

**SCHOOL OF FOREST,
FISHERIES, AND
GEOMATICS SCIENCES**



Association for Forest
Spatial Analysis Technologies